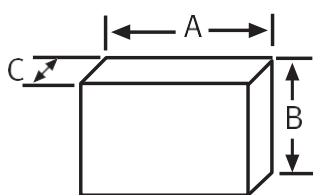




OIL TRANSFER PRESSURE UNITS GP GC HIGH FLOW SYSTEMS

MODEL		GP-2200 NT GP-2200 GE	GP-3200 NT GP-3200 GE	GP-4200 NT GP-4200 GE	GP-6500 NT GP-6500 GE	GP-8500 NT GP-8500 GE	GP-12000 NT GP-12000 GE
FLOW	l/h	2.200	3.200	4.200	6.500	8.500	12.000
CONNECTION TO THE HYDRAULIC CIRCUIT (Ø THREAD / Ø MM)	SUCTION	1" F	1 1/2" F	1 1/2" F	2" F	2" F	2" F
	DRIVE	3/4" F	1" F	1 1/4" F	1 1/2" F	1 1/2" F	2" F
POWER SUPPLY	VOLTS	400 D	400 D	400 D	400 D	400 D	400 D
MOTOR POWER	C.V.	2	2	3	4	4	5,5
	KW	1,5	1,5	2	3	3	4
MAX. PRESSURE	Kg/cm ²	3,5	3,5	3,5	6	6	6
SECURITY VALVE OPEN AT:	Kg/cm ²	4	4	4	6,5	6,5	6,5
MOTOR PROTECTION	IP	55	55	55	55	55	55

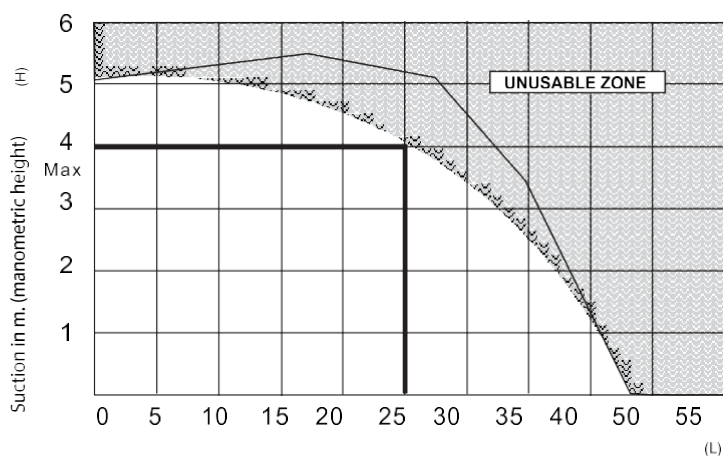
- Subject to technical changes.



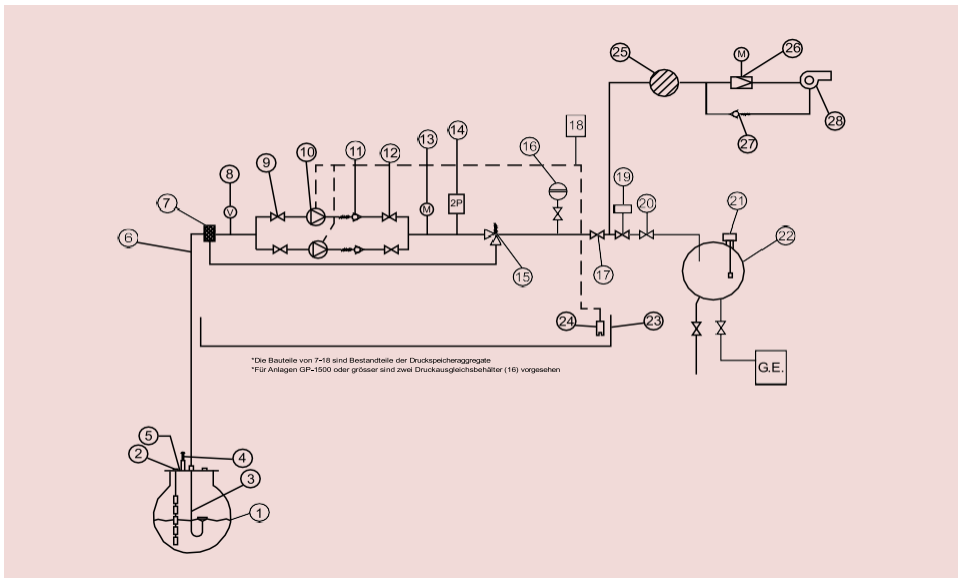
MODEL	GP-2200 GC	GP-3200 GC	GP-4200 GC	GP-6500 GC	GP-8500 GC	GP-12000 GC
A	1200	1200	1200	1200	1200	1200
B	1800	1800	1800	1800	1800	1800
C	85	85	85	85	85	85
Approx. Weight NT (kg)	99	105	110	120	135	140
Approx. Weight GE (kg)	117	127	136	147	164	171

SUCTION DIAGRAM

Light Oil | kinematic viscosity = $\nu_{37} \sim 4$ c St.
density = $\chi_{15} \sim 0,841$ kv./l.



C/Invierno, 4-6
28500 Arganda del Rey - Madrid - Spain
Telf.: (+34) 918 719 294
info@inprord.com - www.inprord.com



- 1) Main storage tank
- 2) Remote level gauge
- 3) Floating suction
- 4) Ventilation Tee
- 5) Manhole
- 6) Suction pipe
- 7) Filter
- 8) Vacuum gauge
- 9) Quick shutoff valve
- 10) Electric gear pump
- 11) Anti-return valve
- 12) Quick shutoff valve (Only for GP-1500)
- 13) Pressure gauge
- 14) Dual-purpose pressure switch
- 15) Conducted escape safety valve
- 16) Membrane expansion vessel
- 17) Quick shutoff valve
- 18) Electric control system for the pressure unit (alternative command)
- 19) Electrically operated valve
- 20) Flow limiter
- 21) SMMR 1 Level switch
- 22) Daily tank
- 23) Drip tray
- 24) Leak detection
- 25) Filter
- 26) Pressure gauge
- 27) Non-return valve
- 28) Burner

GP GC N Pressure accumulator unit, one pump, for heating oil and HVO

Scope of delivery: motor, gear pumping station, coupling, manifold, filter, vacuum gauge, pressure gauge, check valve, safety valve, shut-off valve for supply and discharge line, double function pressure switch adjustable, 4 pressure accumulators with diesel oil-resistant membrane expansion vessel, safety valve opening at 4.5 bar (higher pressure possible on request) - please specify when ordering. All parts mounted on a mounting plate, wired ready for connection, with oil collecting tray and leak detection sensor with 0.75 m probe cable. Voltage-free relay outputs for central building management control system, with 4 signals (BMS). Motor-thermal protection. Potential-free relay outputs for central building management control system, with 4 signals (BMS).

GP GC GE Pressure accumulator units, twin units, for heating oil and HVO

Scope of delivery: 2 motors, 2 gear pumping stations, coupling, manifold, filter, vacuum gauge, pressure gauge, non-return valve, high-pressure relief valve, shut-off valve for supply and discharge line, double function pressure switch adjustable, 4 pressure accumulators with diesel oil-resistant membrane expansion vessel, safety valve opening at 4.5 bar (higher pressure possible on request) - please specify when ordering. All parts mounted on a mounting plate, wired ready for connection, with oil collecting tray and leak detection sensor with 0.75 m probe cable. Voltage-free relay outputs for central building management control system, with 4 signals (BMS). Motor-thermal protection. Potential-free relay outputs for central building management control system, with 6 signals (BMS).

The unit is built and tested according to DIN EN 12514-1

Accessories and adaptations

- Free voltage relay output to control from centralised Building Management System, in kit 3, 4 or 6 signals (2-thermal, motors 1 or 2 ON, low pressure and Leak safety ON).
- GSM alarm system by SMS messages, or connection to modem.
- Adaptation of Pressure Group for high pressure, working conditions of up to 6Kg/cm²
- Leak collector trays with infrared detectors (standard in GP-800 and GP-1500).
- Modifications to adapt to specifically regulated environments with tropicalised equipment or ATEX.
- Solenoid valves with flow limiters, to automate filling in supply tanks for electrical generators.
- Soundproof sheet cabinets with UNE-25 poly-pyramid foam and lock. Manufactured with no back and made-to-measure for each Pressure Group model.
- Burner inlet assembly.
- Modulating burner inlet assembly.



This is a product suitable for projects.
 See all Inpro project references here



research • development

| C/Invierno, 4-6 28500
 | Arganda del Rey, Madrid (Spain)
 | Telf.: (+34) 918 719 294
 | info@inprord.com
 | www.inprord.com



Investigación y Producción S.L. Zweigniederlassung Deutschland

| 63457 Hanau - Voltastr, 10
 | Deutschland (Germany)
 | Telf.: (+49) 06181/9587-0
 | info@simka.de
 | www.simka.de